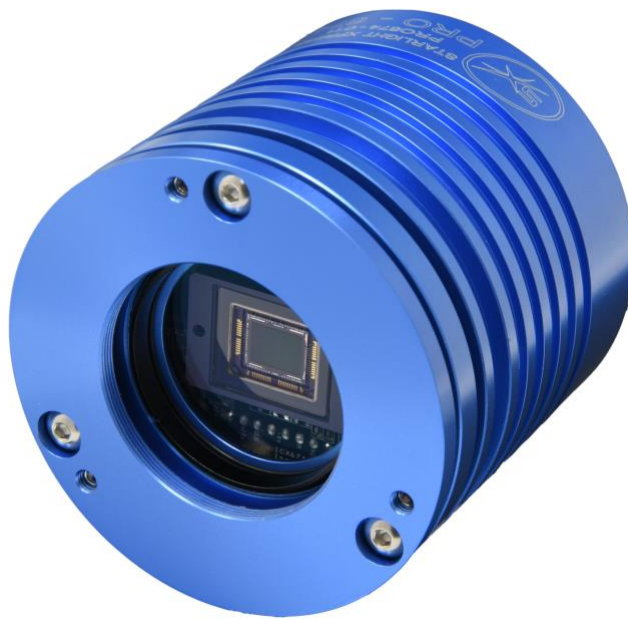




Manual for the TRIUS PRO-674C colour CCD camera



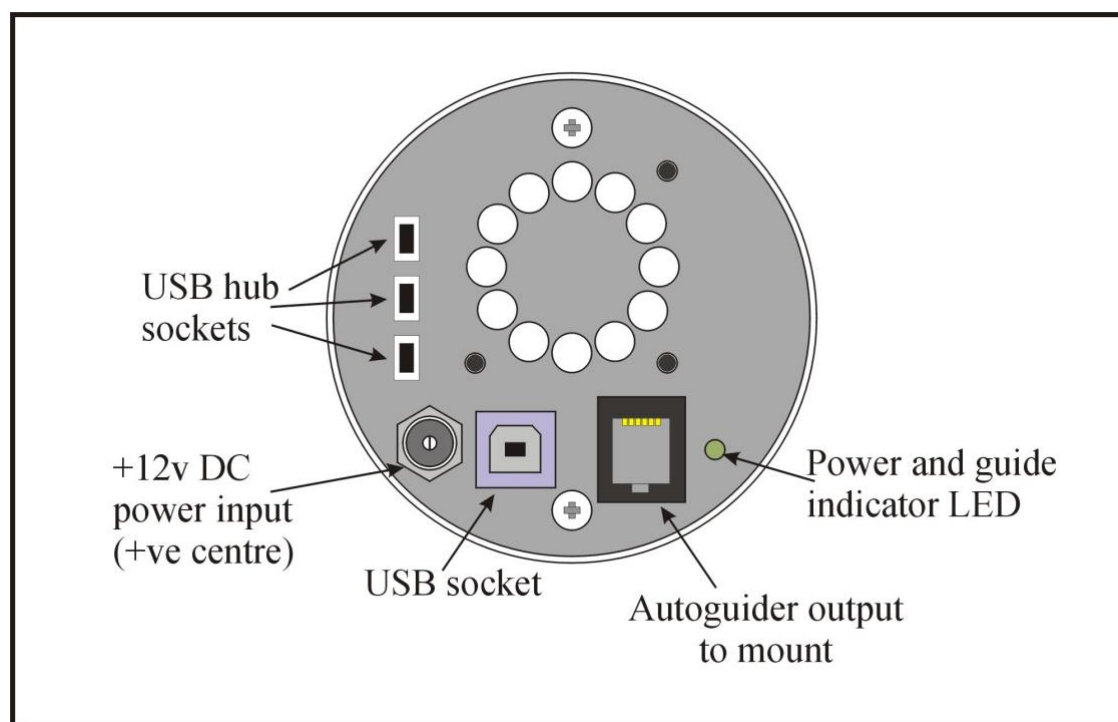
The TRIUS PRO-674C is an advanced, high-resolution one-shot colour, cooled CCD camera, especially designed for astronomical imaging. It uses a third generation version of the very popular Sony 'EXview' CCDs that offer very high QE and extremely low thermal noise. This 'PRO' camera uses an updated version of the original TRIUS main board and has both improved read noise and faster download time. It features an internal USB hub with 3 external ports and a dry argon CCD chamber fill. The USB hub permits several other devices to share the single USB connection and greatly reduces the number of cables required in a typical set-up. For example, a Lodestar PRO or Ultrastar PRO guide camera and an SX filter wheel could use two of the USB ports and the third might connect to an electric focuser, or similar peripheral. The argon fill, along with other improvements to the cooler stack, has improved the delta T to about -42 degrees C below ambient.

The camera also includes a CCD temperature monitoring circuit that provides regulated set-point cooling of the chip, an adjustable chip alignment plate and a very

The TRIUS PRO-674C uses a Sony ICX674AQG 'EXview' progressive scan CCD, with 1940 x 1460 x 4.54µm pixels in a 8.8 x 6.3mm active area. This EXview device has an excellent quantum efficiency, with a broad spectral response peaking at around 77% in yellow light, and an extremely low dark current, well below that of any comparable CCD currently available. While this device also has an excellent blue light sensitivity, it has a strong infra-red response, which makes it ideal for all aspects of both planetary and deep-sky imaging, especially with an H-alpha filter. The H-alpha QE is about 65%, considerably better than other interline chips and even greater than the popular KAF8300 CCD.

The full-frame download time is approximately 4 seconds and a binned 4x4 download takes only 0.5 seconds, so finding and centring are very quick and easy in this mode.

Here is a diagram of the connectors to be found on the rear panel of the camera:



Please take a few minutes to study the contents of this manual, which will help you to get the camera into operation quickly and without problems. I am sure that you want to see some results as soon as possible, so please move on to the 'Quick Start' section, which follows. A more detailed description of imaging techniques will be found in a later part of this manual.

‘Quick Starting’ your TRIUS PRO-674C system

In the shipping container you will find the following items:

- 1) The TRIUS PRO-674C camera head.
- 2) A universal AC power supply module.
- 3) A USB camera cable.
- 4) An adaptor for 1.25" drawtubes, with a 1.25" filter thread.
- 5) An adaptor for 2" drawtubes and M42 Pentax thread lenses.
- 6) A guider output to guider port RJ12 lead.
- 7) Two mini to mini USB 0.5m Cables
- 8) Two Mini to Male B USB 0.5m Cables
- 9) A 'Y' power lead for connecting the cooling fan.
- 10) A USB Stick with the TRIUS PRO-674C control software and this manual.

You will also need a PC computer with Windows XP, Vista or Windows 7 installed. This machine must have at least one USB 2.0 port available and at least 256 Mbytes of memory. If you intend to view the finished images on its screen, then you will also need a graphics card capable of displaying an image with a minimum of 1024 x 768 pixels and 24 bit colour. A medium specification Pentium with between 1GHz and 4GHz processor speed is ideal, but I recommend avoiding some of the lower specification 'Netbook' computers, as they can't really handle the fast data stream from the camera. Please note that USB 2.0 operates at a very high speed and cannot operate over very long cables. Five metres of good quality cable is the maximum normally possible without boosters or extra powered hubs, although you can sometimes get good results at longer distances with very high quality cables.

Installing the USB system:

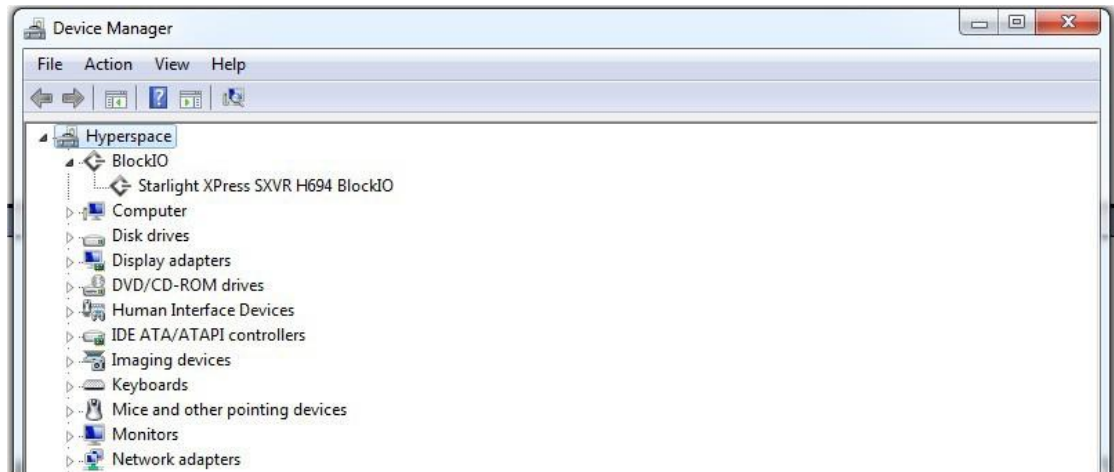
First, find a free USB socket on your PC and plug in the USB cable (do not connect the camera at this time). If you do not have a USB2 capable computer, it is normally possible to install a USB 2 card into an expansion slot.

The next operation is to run the software installer from the USB Stick provided. Insert the USB stick into the computer and wait for Windows Explorer to open with the list of folders on the ROM. Now run the SETUP.EXE file that it contains – this will initiate the self-install software which will guide you through the process of installing the SX camera software onto your computer.

Now connect the USB cable to the socket on the camera rear panel.

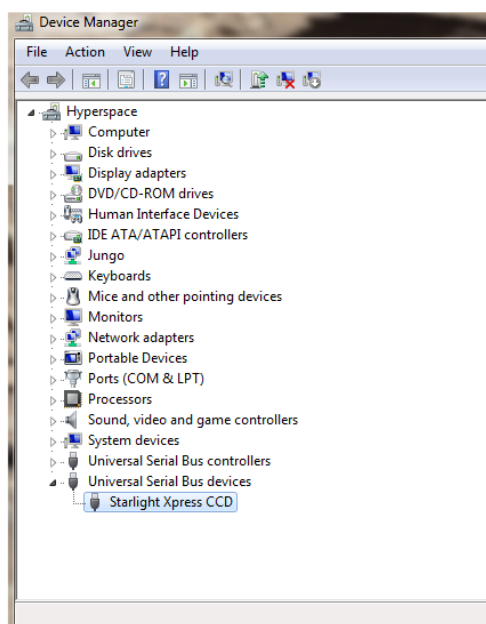


Windows will report 'Found new hardware' and will ask for the location of the drivers. Point the installer at the appropriate driver folder on your USB Stick (32 bit or 64 bit) - note that the 'Windows 8 signed drivers' are OK for Windows 8, Windows 7 and Vista, but not for Windows XP. Use the older 32 or 64 bit drivers for XP machines. Once you select the correct driver package, the driver installation should proceed smoothly. (Ignore any warnings about the older drivers having not been tested by Microsoft).

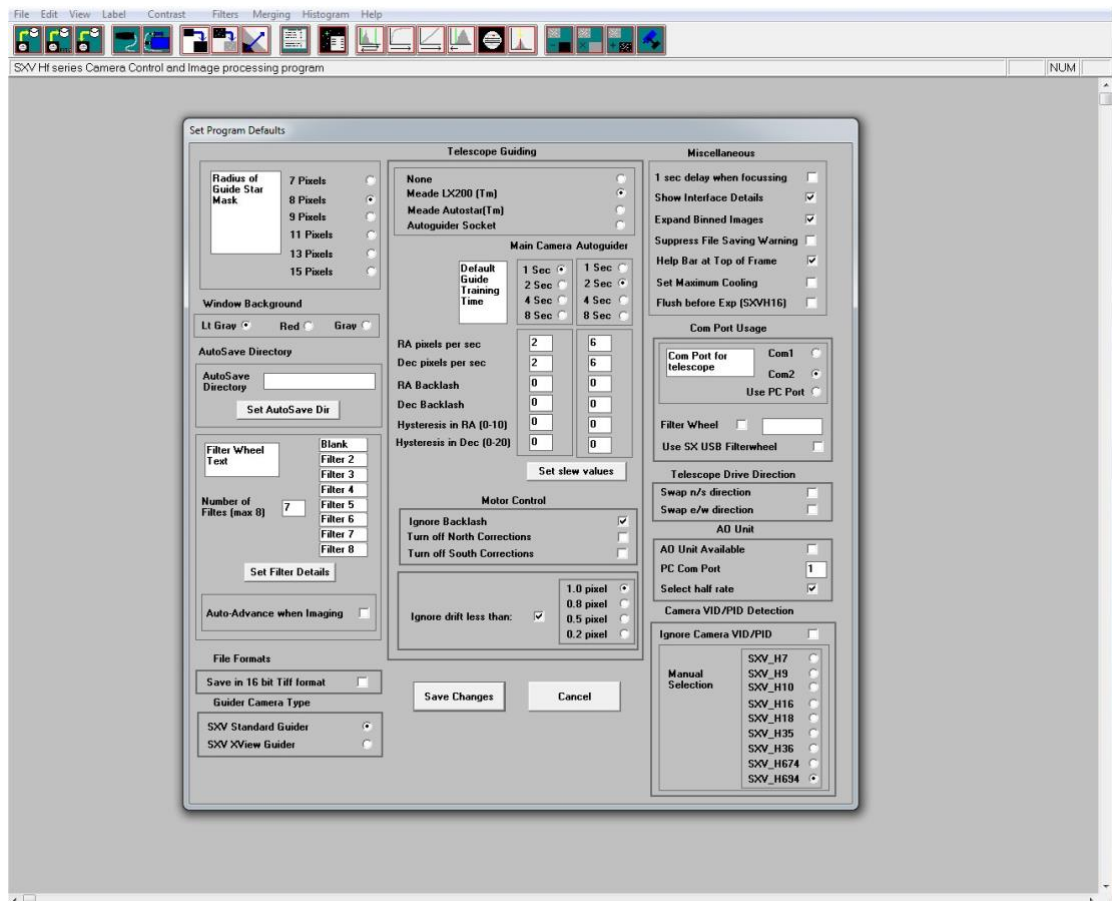


At the end of this process, the USB interface will be installed. The XP drivers will show up as a 'BlockIOClass device' and the camera software will be able to access it. You can confirm that the installation is complete by checking the status of the USB devices in the Windows 'Device Manager' (see above). Start up the Windows 'Control Panel' and select 'System'. Now click on the tab labelled 'Device Manager', 'Hardware', and all of the system devices will be displayed in a list (see above). If the installation is successful, there will be a diamond shaped symbol labelled 'BlockIOClass' and clicking on the '+' sign will reveal it to be a 'Starlight Xpress USB 2.0 SXV-H674C BlockIO camera driver'. If this device shows as faulty, try clicking on it and selecting 'properties' and then 'update driver'. Following the on screen instructions will allow you to re-select the correct inf file from the CD (SXVIO_H674_194.inf) and driver files (SXVIO.sys and generic.sys), which should fix the problem.

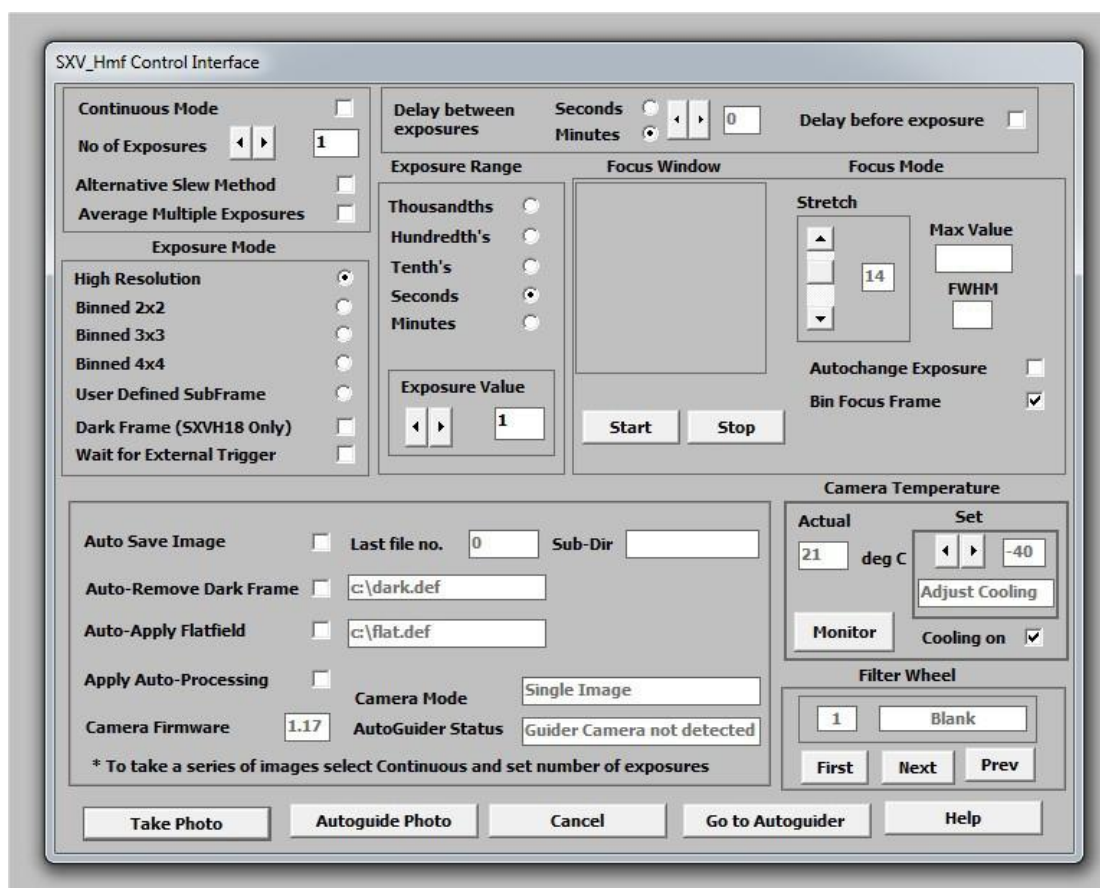
The newer 'Signed' drivers create a device in the 'USB' section of the devices list and this will be found at the bottom of the device manager window.



Now connect up the power supply and switch it on. The supply is a very efficient 'switch mode' unit, which can operate from either 110v or 220v AC via an appropriate mains power cable (supplied). You can now start the software by double clicking on the icon, when you should see the main menu and image panel appear. If this is the first time that it has been run, you will receive a warning about the lack of an 'ini' file – just click on 'OK' and then open 'Set program defaults' from the 'File' menu. In the bottom right hand corner of this box, select SXV-H674C. Now click on 'Save' and the ini file will be created and the software set for your camera.



Now click on the camera icon at the top of the screen. If the USB connection is OK, a message box will inform you of the 'Handle' number for the SXVIO interface and various other version details etc. Click 'OK' and the main camera control panel will now be seen.



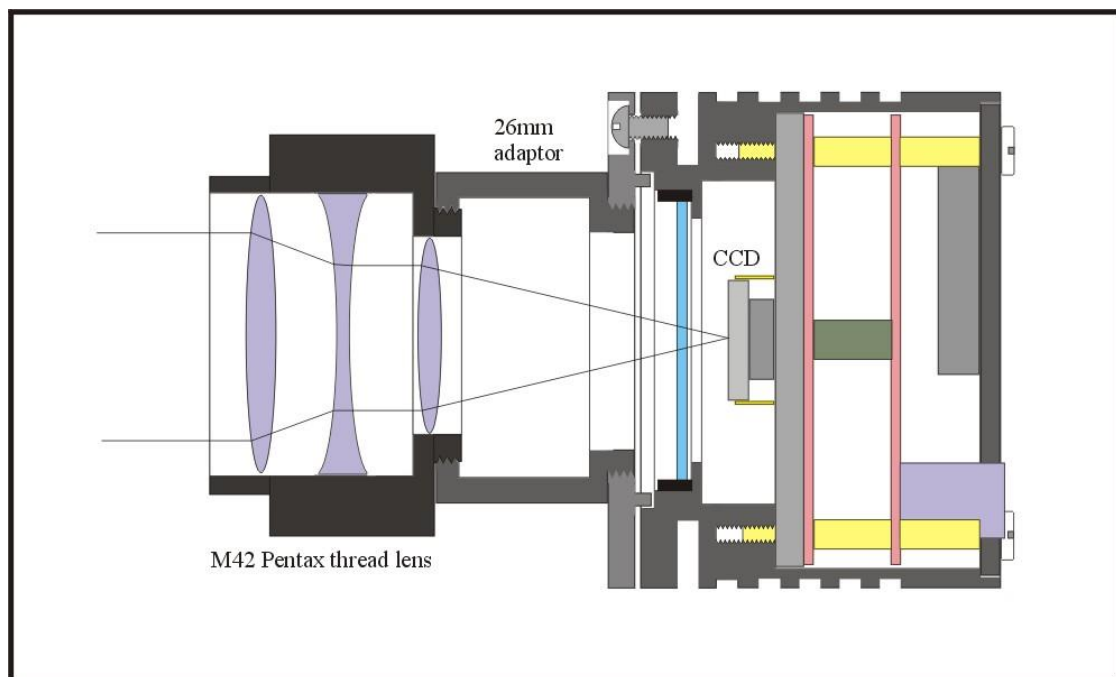
As can be seen above, there is a CCD temperature monitoring window at the right hand side of the panel. At switch-on, this will default to full power cooling with an end point of -40C (actual chip temperature) and, needless to say, this is rather extreme. I recommend changing the set point to about -10C for normal use, but you can go much colder if you are imaging during the winter months. Under indoor conditions, the low airflow will limit the cooling capability, and you should use a set point of no lower than -5C for stable cooling. You can determine the optimum settings for your camera and ambient conditions when you have some experience of using the system, but do not try to operate at extreme cooling when the air temperature is high. Connecting and using the external fan unit will improve the cooling by at least -5C and can give as much as -10C extra delta T. It is connected by using the 'Y' lead provided in the camera component set, as below:



Recording your first image:

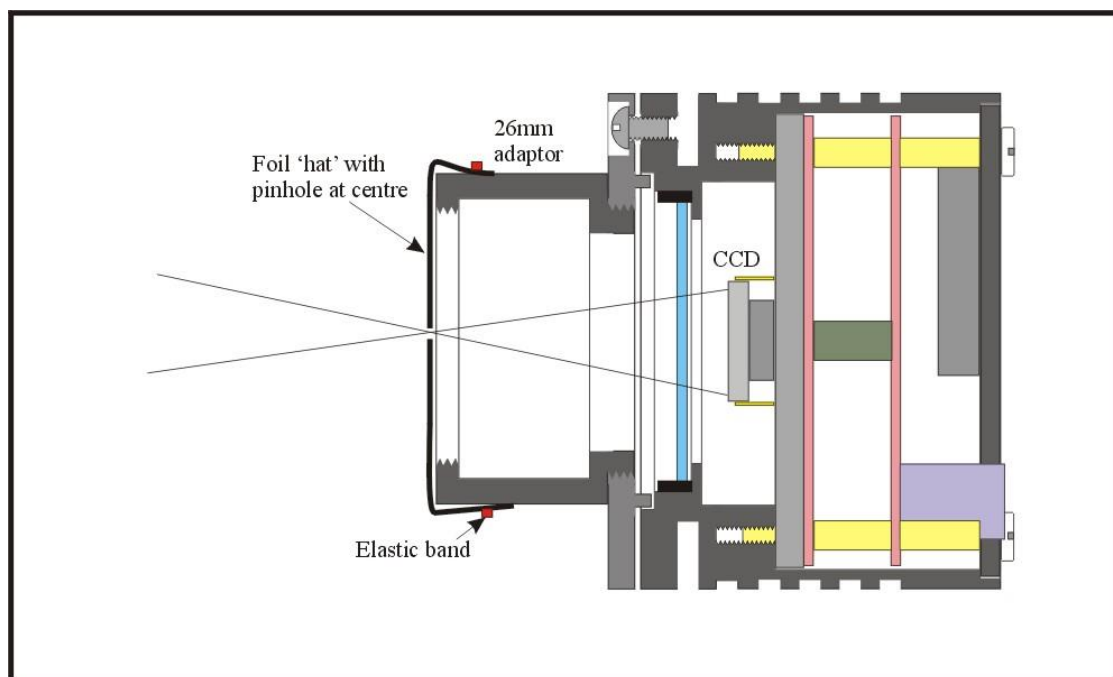
We now have the camera and computer set up to take pictures, but an optical system is needed to project an image onto the CCD surface. You could use your telescope, but this introduces additional complications, which are best avoided at this early stage. There are two simple options, one of which is available to everyone with a sheet of aluminium baking foil:

- 1) Attach a standard 'M42' SLR camera lens to the TRIUS-H674C, using the 26mm spacer to achieve the correct focal distance.



Or

- 2) Create a 'Pin hole' lens by sticking a sheet of aluminium baking foil over the end of the adaptor and pricking its centre with a small pin.



If you use a normal lens, then stop it down to the smallest aperture number possible, (usually F22), as this will minimise focus problems and keep the light level reasonable for daytime testing. The pin hole needs no such adjustments and will work immediately, although somewhat fuzzily!

Point the camera + lens or pinhole towards a well-lit and clearly defined object some distance away. Now enter the 'File' menu in the H674C software and click on 'SX camera interface'. Select an exposure time of 0.1 seconds and press 'Take Photo'.

After the exposure and download have completed (about 4 seconds) an image of some kind will appear on the computer monitor. It will probably be poorly focused and incorrectly exposed, but any sort of image is better than none! In the case of the pinhole, all that you can experiment with is the exposure time, but a camera lens can be adjusted for good focus and so you might want to try this to judge the high image quality that it is possible to achieve.

Various other exposure options are available, as can be seen in the picture above. For example, you can 'Bin' the download 2x2, or more, to achieve greater sensitivity and faster download, or enable 'Continuous mode' to see a steady stream of images. 'Focus mode' downloads a 128 x 128 segment of the image at high speed. The initial position of the segment is central to the frame, but can be moved by selecting 'Focus frame centre' in the 'File' menu and clicking the desired point with the mouse. The focus window has an adjustable 'contrast stretch', controlled by the 12-16 bit slider. The image will be 'normal' if 16 bits is selected, while setting lower values will increase the image brightness in inverse proportion.

If you cannot record any kind of image, please check the following points:

- 1) *Ensure that the power indicator lamp is on and that the cables are properly home in their sockets.*
- 2) *If the screen is completely white, the camera may be greatly overexposed. Try a shorter exposure time, or stop down your lens. See if covering the lens causes the image to darken.*
- 3) *If the USB did not initialise properly, the camera start-up screen will tell you that the connection is defective. Try switching off the power supply and unplugging the USB cable. Now turn the power supply on and plug in the USB cable. This will re-load the USB software and may fix the problem after restarting the SXV_hmf_usb program. Otherwise, check the device driver status, as previously described, and re-install any drivers which appear to be defective.*
- 4) *If you cannot find any way of making the camera work, please try using it with another computer. This will confirm that the camera is OK, or faulty, and you can then decide how to proceed. Our guarantee ensures that any electrical faults are corrected quickly and at no cost to the customer.*

As the TRIUS PRO-674C is a 'Single-shot' colour camera, the full resolution raw image will show a fine grid pattern, due to the RGB colour filters on the CCD chip surface. This is normal and will disappear once the image has been converted to colour by the software. Unlike commercial digital cameras, astronomical colour cameras do not normally output a colour image directly. This is so that various image corrections can be performed on the raw data (e.g. dark frame subtraction), as these are impractical after conversion to colour. Also note that binning the raw image at anything other than 1x1, will destroy any colour information and so output only monochrome images.

Converting your images to colour:

The images from your camera are monochrome at the moment and they need to be converted into true colour before enhancing them. Any processing of the image, other than calibration with dark frames etc., will distort the colour rendering of the result and so the conversion needs to be done before proceeding. **Important!** *You cannot convert a binned image to colour, as binning sums the different colour pixels together and averages out the colour information. All images that you intend to colour convert must be taken in binned 1x1 mode. Also please note that you cannot sum frames together before colour conversion. This must be done **after** the images have been colour converted.*

Here is a small enlarged section of a daylight image which may be similar to your test image taken with a 50mm camera lens



The visible grid encodes the colour information within the image data and will now be used to decode the red, green and blue image planes into a colour picture. To do this, open the 'Colour' header tag where you will see the 'Synthesize colour image' option. Click on this to open the colour synthesis control panel.

The synthesis control panel contains several options for correcting colour bias and noise.

- 1) **Daylight Image?** – If an unfiltered lens is used, the infra-red content of the light will tend to produce a Green – Blue shift in the balance. A partial correction of this bias is provided by selecting this option, but the best option is to use an infra-red blocking filter when taking daylight shots (see 5 below).
- 2) **Light Pollution Correction:** - This option is for deep sky colour images, where a strong colour bias is often present in the sky background. This option attempts to return the background colour to a neutral grey.
- 3) **Colour Smoothing Filter:** - Applies a low pass filter to the colour data to smooth out colour noise.

- 4) **Apply Anti-Alias:** - Runs a special filter over the colour data to remove coloured artefacts around sharp edges. This is especially useful for cleaning up erratically coloured star images.
- 5) **IR Filter Used?** – Sets the colour balance to allow for the loss of infra-red content when using an IR blocking filter.
- 6) **Stretching:** - A selection of contrast-boosting options which are pre-set for various subjects.
- 7) **Remove Background:** - This option will adjust the sky background brightness to give an optimum background level.
- 8) **High Pass filters:** - Automatically sharpen the luminance data to emphasise fine details. Most useful for sharpening planetary images but will also increase the noise content.

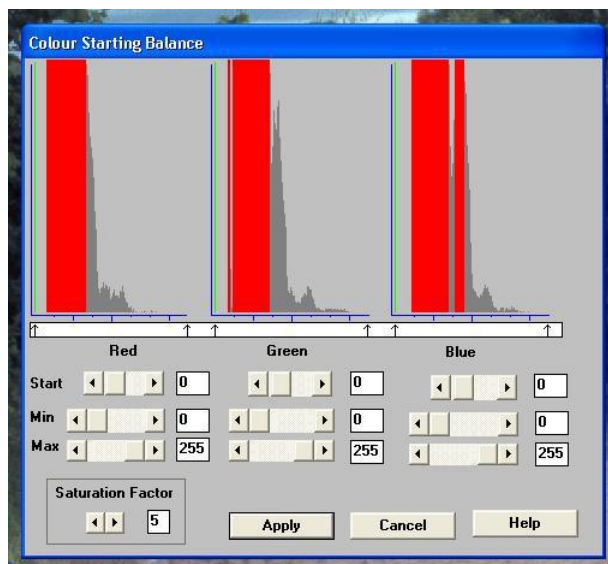
I suggest that you switch on the Colour smoothing filter and the Anti-alias filter – you can experiment with the other options as you gain more experience. Now click on 'Create image' and you should see that the grid pattern disappears and is replaced by colour image data.



If the colour is roughly correct, then all is well. However, the colour decoding is reliant on the filter pattern being properly registered with the processing software and this can vary. Colour conversion involves running a software routine which uses the brightness data from each pixel to generate colour values. As the brightness of each pixel is related to the colour of light falling on it and the colour filter integrated onto the pixel during CCD manufacture, we can translate this into true colour data. It is very important that the software knows the colour filter positions, or the colours will be translated incorrectly, so the software allows the user to define X (pixel) and Y (line) offsets to correct this. If the colour is badly wrong, try opening the 'Set

program defaults' dialog box and altering the 'Pixel' and 'Line' offsets. Reload the raw file and try synthesis again. If it's still not right, experiment with just a pixel offset or just a line offset until the colour is good.

There is every reason to expect that the image will be reasonably well colour balanced, but if it is not, you can adjust the colour in the 'Set Colour Balance' dialog box (Under 'Colour' in the main menu).



The colour balance controls seem complex, but are really quite easy to use. The most useful controls are the 'Start' and 'Saturation Factor' settings. Saturation factor will simply vary the colour intensity, without any alteration of the colour balance, but the 'Start' settings for each colour will alter the colour rendering of the dimmer parts of the image. As most astronomical images are badly affected by light pollution, which affects the dimmer background colours in particular, the start point settings are particularly helpful for correcting this. If you move the start point of the Red histogram a few points to the right and click on 'Apply', the new image will have LESS red in the background and will appear more Cyan. Similarly, if you move the Green start point to the right, the image will appear more Magenta and moving the blue start point will turn it more Yellow. Do not move the start points beyond the start of the main burst of histogram data, or you will introduce colour errors into low saturation parts of the image. Just move the sliders by small amounts in the clear area below the main peak, until the background is nicely balanced.

In some cases, the histograms may all start a long way above zero (usually in astro. images with a lot of light pollution). In this case, slide the start point settings for all colours until they are equally distant from the beginning of the colour data, but quite close to it. This will both correct the colour balance (apart from any fine tweaks) and increase the colour saturation.

In some images, the colour data may be balanced differently in the highlights and shadows. For example, the dark areas may be quite neutral in colour, but the highlights may be bluish in tint. This indicates a 'slope error' in one or more colours and, in this example it is caused by the blue data increasing too quickly when

compared with the red and green data. To correct for this, the other histogram sliders may be used as slope adjusters. In the case of the excess blue, try increasing the top end (Max) value to greater than 255 (300 max is allowed). This will reduce the blue slope and result in a more yellowish rendition. Alternatively, you can increase both the red and green slopes by setting the upper red and green sliders below 255.

Image enhancements:

Your first image may be satisfactory, but it is unlikely to be as clear and sharp as it could be. Improved focusing and exposure selection may correct these shortcomings, and you may like to try them before applying any image enhancement with the software. However, there will come a point when you say, "That's the best that I can get" and you will want to experiment with the effects of image processing. In the case of daylight images, the processing options are many, but there are few that will improve the picture in a useful way. The most useful of these are the 'Normal Contrast Stretch' and the 'High Pass Low Power' filter. The high pass filter gives a moderate improvement in the image sharpness, and this can be very effective on daylight images.

Too much high pass filtering results in dark borders around well-defined features and will increase the noise in an image to unacceptable levels, but the Low Power filter is close to optimum and gives a nicely sharpened picture.

The 'Contrast' routines are used to brighten (or dull) the image highlights and shadows. A 'Normal' stretch is a simple linear operation, where two pointers (the 'black' and 'white' limits) can be set at either side of the image histogram and used to define new start and end points. The image data is then mathematically modified so that any pixels that are to the left of the 'black' pointer are set to black and any pixels to the right of the 'white' pointer are set to white. The pixels with values between the pointers are modified to fit the new brightness distribution. Try experimenting with the pointer positions until the image has a pleasing brightness and 'crispness'.

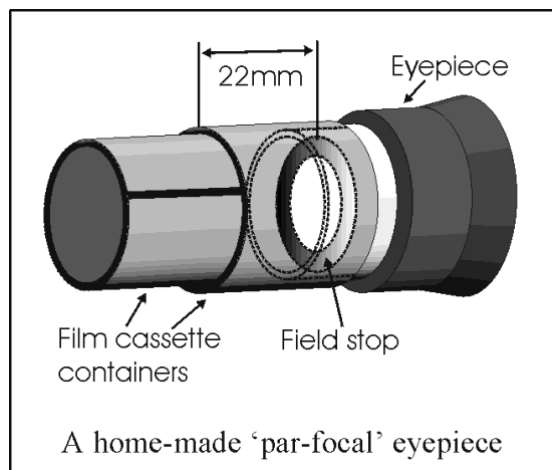
At this point, you will have a working knowledge of how to take and process an TRIUS-H674C image. It is time to move on to astronomical imaging, which has its own, unique, set of problems!

Astronomical Imaging with the TRIUS PRO-674C

1) Getting the image onto the CCD:

It is fairly easy to find the correct focus setting for the camera when using a standard SLR lens, but quite a different matter when the TRIUS PRO-674C is attached to a telescope! The problem is that most telescopes have a large range of focus adjustment and the CCD needs to be quite close to the correct position before you

can discern details well enough to optimise the focus setting. An additional complication is the need to add various accessories between the camera and telescope in order that the image scale is suitable for the subject being imaged and (sometimes) to include a 'flip mirror' finder unit for visual object location. A simple, but invaluable device, is the 'par-focal eyepiece'. This is an eyepiece in which the field stop is located at the same distance from the barrel end, as the CCD is from the camera barrel end.



When the par-focal eyepiece is fitted into the telescope drawtube, you can adjust the focus until the view is sharply defined and the object of interest is close to the field centre. On removing the eyepiece and fitting the CCD camera, the CCD will be very close to the focal plane of the telescope and should record the stars etc. well enough for the focus to be trimmed to its optimum setting

Several astronomical stores sell adjustable par-focal eyepieces, but you can also make your own with a minimum of materials and an unwanted Kellner or Plossl ocular.

Just measure a distance of 22mm from the field stop of the eyepiece (equivalent to the CCD to adaptor flange distance of the camera) and make an extension tube to set the field stop at this distance from the drawtube end. Cut-down 35mm film cassette containers are a convenient diameter for making the spacer tube and may be split to adjust their diameter to fit the drawtube.

It is necessary to set up a good optical match between your camera and the telescope. Most SCTs have a focal ratio of around F10, which is too high for most deep sky objects and too low for the planets! This problem is quite easy to overcome if you have access to a focal reducer (for deep sky) and a Barlow lens for planetary work. The Meade F6.3 focal reducer is very useful for CCD imaging and I can recommend it from personal experience. It does not require a yellow filter for aberration correction, unlike some other designs, so it can also be used for tri-colour imaging. If you use a focal reducer, using it at maximum reduction may cause the relatively large chip of the TRIUS-H674C to suffer from considerable 'vignetting' (dimming towards the corners) and this will be difficult to remove from your images. Experiment with the distance between the reducer and the camera to optimise the

results. The longer the extension tube used, the greater the focal reduction will be. As a guide, most CCD astronomers try to maintain an image scale of about 2 arc seconds per pixel for deep sky images. This matches the telescope resolution to the CCD resolution and avoids 'undersampling' the image, which can result in square stars and other unwanted effects. To calculate the focal length required for this condition to exist, you can use the following simple equation:

$$F = \text{Pixel size} * 205920 / \text{Resolution (in arc seconds)}$$

In the case of the TRIUS-H674C and a 2 arc seconds per pixel resolution, we get

$$F = 0.00454 * 205920 / 2 = 467\text{mm}$$

For a 200mm SCT, this is an F ratio of $467 / 200 = F2.34$, which is much less than can be achieved with the Meade converter and appropriate extension tube. However, moderate deviations from this focal length will not have a drastic effect and so any F ratio from about F4.5 to F6.3 will give good results. It is clear from this result that the 'Starizona Hyperstar' adaptor is very well suited to use with the H674C, as it operates at around F1.95, so you might be interested in getting one of these.

The same equation can be used to calculate the amplification required for good planetary images. However, in this case, the shorter exposures allow us to assume a much better telescope resolution and 0.25 arc seconds per pixel is a good value to use. The calculation now gives the following result:

$$F = 0.00545 * 205920 / 0.25 = 4489\text{mm}$$

This is approximately F22 when used with a 200mm SCT and so we will need a 2 or 3x Barlow lens. Barlow lenses are less critical than focal reducers and most types can be used with good results. However, if you are buying one especially for CCD imaging, I recommend getting a 3x or even 5x amplifier, or the planets will still be rather small in your images.

Achieving a good focus:

Your starting point will depend on the focus aids, if any, which you are using. With the par-focal eyepiece, you should slip the eyepiece into the drawtube and focus visually on a moderately bright star (about 3rd magnitude). Now withdraw the eyepiece and carefully insert the camera nosepiece, until it is bottomed against the drawtube end, and then lock it in place.

SXV_hmf_usb.exe has a focus routine that will repeatedly download and display a 128 x 128 pixel segment of the image at relatively high speed. This focus window may be positioned anywhere in the camera field and can be displayed with an adjustable degree of automatic contrast stretching (for focusing on faint stars). To use this mode, start up the software and select the SXV camera interface (File menu). Set the camera mode to Binned 1x1 and select an exposure time of 1 second.

Press 'Take Picture' and wait for the image to download. There is a good chance that your selected star will appear somewhere within the image frame and it should be close to a sharp focus. If the focus is still poor, then it may appear as a pale disk of light, often with a dark centre (the secondary mirror shadow in an SCT, or Newtonian). Now select the 'File' menu again and click on 'Focus frame centre'; you can now use the mouse pointer to click on the star image and the new focus frame co-ordinates will be displayed. Now return to the camera interface window and click on 'Start' in the Focus frame. The computer will now display a continuous series of 128 x 128 pixel images in the focus window and you should see your selected star appear somewhere close to the centre. A 'peak value' (the value of the brightest pixel) will also be shown in the adjacent text box and this can be used as an indication of the focus accuracy. Although the peak value is sensitive to vibration and seeing, it tends towards a maximum as the focus is optimised. Carefully adjust the focus control on your telescope until the image is as sharp as possible and the peak value reaches a maximum. Wait for any vibration to die down before accepting the reading as reliable and watch out for bursts of bad seeing, which reduce the apparent focus quality. Quite often, the peak value will increase to the point where it is 'off scale' at 4095 and in this case you must halt the focus sequence and select a shorter exposure if you wish to use the peak value as an indicator. Once you are happy with the focus quality achieved, you might like to trim the settings of your par-focal or flip mirror eyepiece to match the current camera position.

Although you can reach a good focus by the above method, many observers prefer to use additional aids, such as Hartmann or Bahinitov masks (an objective cover with several spaced holes) or diffraction bars (narrow parallel rods across the telescope aperture). These make the point of precise focus easier to determine by creating 'double images' or bright diffraction spikes around stars, which merge at the setting of exact focus. The 12-16 bit slider control allows you to adjust the contrast of the focus frame for best visibility of the star image. It defaults to maximum stretch (12 bits), which is generally ideal for stars, but a lower stretch value is better for focusing on planets.

Taking your first astronomical image:

I will assume that you are now set up with a focused camera attached to a telescope with an operating sidereal drive. If so, you are now in a position to take a moderately long exposure of some interesting deep-sky astronomical object (I will deal with planets later). As most drives are not very accurate beyond a minute or two of exposure time, I suggest that you find a fairly bright object to image, such as M42, M13, M27 or M57. There are many others to choose from, but these are good examples.

Use the finder to align on your chosen object and then centre accurately by using the focus frame and a short exposure of between 1 and 5 seconds. The '12-16 bit' slider in the focus frame allows you to adjust the image contrast if you find that the object is too faint with a short exposure. Once properly centred and focused, take an exposure of about 60 seconds, and observe the result. Initially, the image may appear rather barren and show only a few stars, however, there is a great deal of

data hidden from view. You can get to see a lot of this, without affecting the image data, if you go to the 'View' menu and select 'Auto Contrast Stretch Image'. The faint image data will then appear in considerable detail and I think that you will be impressed by the result!

If you are happy with the image, go to the 'File' menu and save it in a convenient directory.



A 1200 second exposure of the Rosette through an IDAS filter (non-linear stretched)

Most competitive brands of CCD camera require a 'dark frame' to be subtracted from your images to achieve the best results. A dark frame is simply a picture which was taken with the same exposure as your 'light frame', but with the telescope objective covered, so that no light can enter. It records only the 'hot pixels' and thermal gradients of your CCD, so that these defects are largely removed when the dark frame is subtracted from the light frame. The TRIUS PRO-674C CCD is quite different from those used in other brands of camera and generates an extremely low level of dark noise. Indeed, it is so low that subtracting a dark frame can actually INCREASE the noise in your images! This is because the statistical noise of the dark frame can exceed the 'pattern noise' from warm pixels and hence add to that of the subtracted result. If your test pictures have an exposure time of less than about 10 minutes (as above), then don't bother with a dark frame, just 'kill' any hot pixels with your processing software. In TRIUS PRO-674C, the 'Median filter' can do this, but

other software (e.g. Maxim DL) will provide a 'hot pixel killer' that can be mapped to specific locations in the image, or methods such as 'Sigma combine' may be used.

In the unlikely event that you feel that dark frame really is necessary, please proceed as follows:

To take a dark frame, just cover the telescope objective with the lens cap and take another exposure with the same length as that of the light frame. This image will be a picture of the dark signal generated during your exposure and it should be saved with your image for use in processing the picture. If many such darks are recorded and averaged together, the statistical noise will be reduced, but the gains to be had are rather small compared with the effort involved.

As variations in ambient temperature will affect the dark signal, it is best to take the dark frames within a few minutes of capturing your images. For the same reason, it is not wise to use 'old' dark frames if you want the best possible results, however, some software allows you to scale library dark frames to match the image (e.g. AstroArt) and this can be useful as a time saver.

'Bias frames' are somewhat more useful than dark frames when using the TRIUS-H674C. A bias frame is essentially a zero exposure dark frame and records any minor readout defects that the CCD may possess, so a 'bias frame subtraction' can clean up any 'warm columns' or shadings that are created during readout. To record a bias frame, cover the camera aperture and take a 1000th of a second exposure. If you take at least 10 such frames and average them together, the resulting 'master bias' can be used to clean up readout defects for many months before CCD ageing changes require another set to be recorded.

'Flat fields' are often recommended for optimising the results from your CCD camera, but these are generally less important than dark frames, especially if you make sure that the optical window of the camera is kept dust-free. The purpose of a flat field is to compensate for uneven illumination and sensitivity of the CCD and it is better to avoid the need for one by keeping the optics clean and unvignetted. I will ignore flat fielding for current purposes and describe the process in detail at a later stage.

Processing a deep-sky image:

1) Make sure the 'Auto Contrast Stretch' is switched off and load your image into SXV_hmf_usb. If you intend to subtract a dark frame, select 'Merge' and then 'Subtract Dark Frame'. Pick the appropriate dark frame and the software will then remove the dark signal from your image, leaving it somewhat darker and slightly smoother than before.



M42 – 30 seconds exposure at F2 with a C8 Hyperstar

2) Once you have subtracted any dark frame, you can convert the raw image to colour.



3) The resulting image will probably look faint and dull, possibly with a pale yellowish background, due to light pollution so it is now time to process the 'luminance' (brightness and contrast) of the image to get the best visual appearance. First, use the 'Normal' contrast stretch to darken the background by setting the 'Black' slider just below the main peak of the histogram. Alternatively, you can use the 'Remove Background' option to let the software decide on the best setting. This will greatly reduce the background brightness and the image will begin to look rather more

attractive, although dark. You can now try brightening the highlights with another 'Normal' stretch, in which you bring down the 'White' slider to just above the main image peak. The best setting for this is rather more difficult to guess and you may need several attempts before the result is ideal. Just use the 'Undo last filter' function, if necessary, to correct a mistake. Normal (linear) stretches can give a nice result on many objects, but you may find that bright areas 'burn-out' badly with this function. It is often much better to use a 'Non-linear' stretch to compress the brighter regions, while expanding the faint data. Here is the result of a non-linear stretch on the M42 image:



The image now looks quite impressive and I hope that you like this result from this simple processing.

Further small refinements are usually possible and you will become expert at judging the best way to achieve these as your experience increases. As a rough guide, the 'Filters' menu can be used to sharpen, soften or noise reduce the image. Strong 'High Pass' filters are usually not a good idea with deep sky images, as the noise will be strongly increased and dark rings will appear around the stars, but a 'Median' filter can remove odd speckles and a mild 'Unsharp Mask' (Radius 3, Power 1) will sharpen without too much increase in noise.

Other things to try, include summing several images for a better signal to noise ratio. Summing can be done in the 'Merge' menu and involves loading the first processed image, selecting a reference point (a star) then loading the second image and finding the same star with the mouse. Once the reference is selected, you can either add directly, or average the images together. Averaging is generally better, as you are less likely to saturate the highlights of the picture. The signal-to-noise ratio will improve at a rate proportional to the square root of the number of summations (summing 4 images will double the signal-to-noise), but **different** exposures must be used. Summing an image with itself will not improve the S/N ratio. Also note that you cannot sum images before colour conversion, or the colour data will be destroyed!

Although I have concentrated on the use of a telescope for deep-sky imaging, do not forget that you have the option of using an ordinary camera lens for impressive wide-field shots! A good quality 200mm F3.5 lens with an infrared blocking filter will yield very nice images of large objects, such as M31, M42, M45 etc. If you cannot obtain a large IR blocker for the front of the lens, it is quite acceptable to place a small one behind the lens, inside the adaptor tube. You can even try using a hydrogen-alpha filter to bring out nebulae, reduce light pollution and sharpen the star images to pin-points.

Taking pictures of the planets:

Planetary imaging is in many ways quite different from deep sky imaging. Most deep sky objects are faint and relatively large, so a short focal length and a long exposure are needed, while planets are bright and very small, needing long focal lengths and short exposures. High resolution is critical to achieving good results and I have already shown how a suitable focal length can be calculated and produced, using a Barlow lens.

Many camera users comment on the difficulty of finding the correct focus when taking pictures of Jupiter etc. This is usually due to poor seeing conditions, which are only too common, but may also be due in part to poor collimation of your telescope. Please ensure that the optics are properly aligned as shown by star testing, or by using one of the patent collimation aids that are widely available. It is also better to use a star for initial focusing, as planetary detail is difficult to judge in bad seeing. Although the star will also suffer from blurring, the eye can more easily gauge when the most compact blur has been achieved!

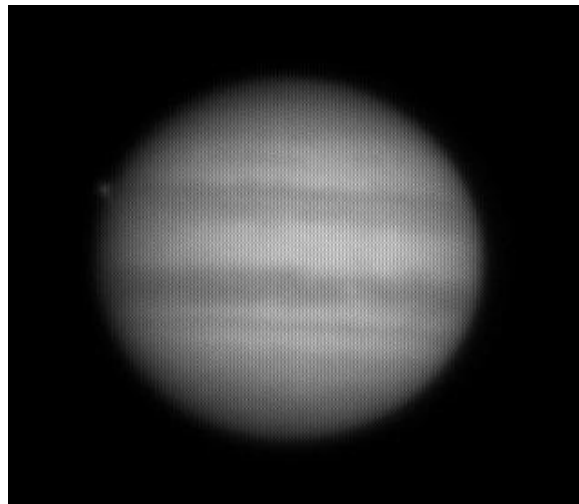
You could begin by imaging lunar craters, or the planets, Jupiter, Saturn or Mars. The rapid variations of seeing which accompany planetary imaging, will ruin the definition of about 95% of your images and so I recommend setting the camera to run in 'Autosave' mode. This will automatically take a sequence of images and save them with sequential file names in your 'Autosave' directory. Dozens of images will be saved, but only one or two will be satisfactory for further processing. The 'Subframe' mode of the SXV may be found useful for limiting the wasted area and reducing the download time of small planetary images.

To start the Autosave process, call up the SXV Camera Interface and select the 'Continuous Mode' check box at the top (make sure the rest are unchecked). Now check the 'Autosave Image' checkbox near the bottom of the window. If you now click on 'Take Picture' the automatic sequence will begin and will not stop until you press a computer key. The images will be saved in FITs format with sequential names such as 'Img23, Img24....' and will be found in the 'Autosave' directory (or a sub-directory of Autosave, set up in the program defaults menu).

The exposure time needed for good planetary images is such that the image histogram has a peak value at around 200 and does not extend much above 220 (Ignore the major peak near zero, due to the dark background). If you use too short an exposure time, the image noise level will be increased, and if too long a time is used you will saturate the highlights and cause white patches on the image. With the recommended focal length, Jupiter and Mars will both need an exposure time of between 0.1 and 1 seconds and Saturn will need between 0.5 and 2 seconds.

Processing a planetary image:

Planetary images have one major advantage over deep sky images, when you come to process them – they are MUCH brighter, with a correspondingly better signal to noise ratio. This means that aggressive sharpening filters may be used without making the result look very noisy and so some of the effects of poor seeing can be neutralised.



A raw image

Try applying an 'Unsharp Mask' filter with a radius of 5 and a power of 5. This will greatly increase the visibility of any detail on the planet, but the optimum radius and power will have to be determined by experiment.



After conversion and the application of an 'Unsharp mask'

In general terms, the larger the image and the worse the seeing, then the wider the radius for best results. My Jupiter shots are usually about one third the height of the CCD frame and I find that the 'radius 5, power 5' values are good for most average seeing conditions. If you have exceptionally good conditions, then a reduction to R=3, P=3 will probably give a more natural look to the image, as too large a radius and power tends to outline edges with dark or bright borders.

As a finishing touch, the application of a Median filter or a Weighted Mean Low Pass filter can be useful to smooth out the high frequency noise after a strong Unsharp Mask.

As with deep-sky images, it is advantageous to sum planetary images together to improve the signal to noise ratio. In this case, the 'averaging' option should always be used, or the result is likely to exceed the dynamic range of the software and saturate the highlights. Aligning the images is always something of a problem, as there are rarely any stars to use when imaging the planets, but Jupiter's satellites can be useful reference points. Otherwise, you will have to find a well-defined feature on the planet, or estimate where the centre of the disk is located. Some more sophisticated software can automatically align planetary images and you may find these programs (e.g. 'Registax') to be very useful.

Other features of the TRIUS PRO-674C hardware and software

'Slew & Sum' imaging:

The TRIUS PRO-674C can be used in an automatic image-stacking mode, called 'Slew & Sum'. The camera is set to take several sequential exposures, which are automatically 'slewed' into alignment and then summed together by the software.

This mode can help to overcome a poor RA drive by summing images that have exposure times shorter than the drive error period. The resulting image has more noise than a single exposure of the same total length, but this method of imaging is still an effective way of making long exposures without a guider.

To take an S&S image, go to the camera interface window and select an exposure time for one image of the sequence. Do not use a very short exposure time, as the read-out noise will become dominant. About 30 seconds is a reasonable minimum. Now go to the 'Multiple Exposure Options' and select a number of exposures to take. You can also select to average the images, rather than adding them, and there is a 'Alternative Slew Mode' available, which uses the correlation of image areas, rather than a single star. This mode can be better in dense star fields. Another option is 'Auto remove dark frame'. This is advisable with S&S images, as the slewing will mis-register the images with a single dark frame that is applied to the finished sequence. To use this option, you will need a dark frame, taken with the same exposure time as a single image from the sequence. This is stored on drive C with the name 'dark.def'

Now click on 'Take Picture' and the sequence will begin.

Using the 'Binned' modes:

N.B. Binning will destroy any colour data – do not use binning for images that you want to convert to true colour!

Up to this point, I have assumed that the full resolution, imaging mode is being used. This is fine for most purposes, but it will often provide more resolution than the optical system, or the seeing, allows. 'Binned 2x2' mode sums groups of 4 pixels into one output pixel, thus creating a pixel image with 4 times the effective sensitivity. Using 2x2 binning, you can considerably improve the sensitivity of the TRIUS-H674C without losing a great deal of resolving power, so you may like to use this mode for many faint deep-sky objects. Other binning modes (3x3 and 4x4) are available and will further increase the image brightness and reduce its resolution. However, generally, these are more useful for finding faint objects, than for imaging.

Taking and using a flat field:

Flat fields are images, which display only the variations of illumination and sensitivity of the CCD and are used to mathematically modify a wanted image in such a way that the errors are removed. Common flat field errors are due to dust motes on the camera window and vignetting effects in the optical system of the telescope. Dust motes act as 'inverse pinholes' and cast out-of-focus images of the telescope aperture onto the CCD chip, where they appear as shadow 'do-nuts'. Most optical systems show some vignetting at the edges of the field, especially when focal reducers are used. This causes a brighter centre to show in images, especially when there is a lot of sky light to illuminate the field.

If dust motes are your main problem, it is best to clean the camera window, rather than to rely on a flat field to remove the do-nuts. Flat fields always increase the noise in an image and so physical dust removal is the best option. If you have serious vignetting, first check whether the optical system can be improved. The most likely cause of this problem is trying to use too powerful a degree of optical compression with a focal reducer and you might want to try moving the camera closer to the reducer lens.

If you really do need to use a flat field for image correction, then it must be taken with care. It is most important that the optical system **MUST NOT** be disturbed between taking your original images and taking the flat field. Any relative changes of focus and rotation etc. will upset the match between flat field and image and the result will be poor correction of the errors. The other necessity for recording a good flat field is a source of very even illumination of the telescope field. This is surprisingly difficult to achieve and many designs of light source have appeared in the literature and on the Web. These usually consist of a large wooden box, containing several lamps and an internal coating of matt white paint, which is placed over the objective of the telescope to provide an evenly illuminated surface. These can work well, but I prefer a simpler method, as follows:

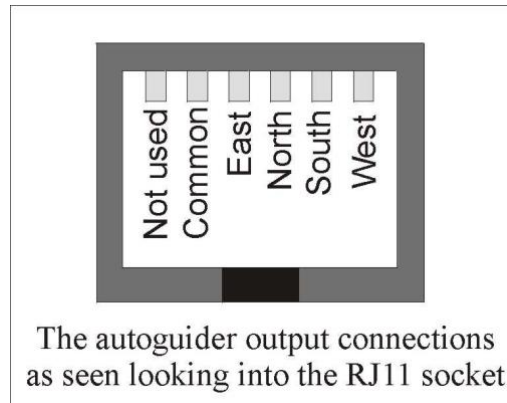
Most imaging sessions begin or end in twilight and so the dusk or dawn sky can provide a distributed source of light for a flat field. However, using the sky directly is likely to result in recording many unwanted stars, or patches of cloud etc., so a diffuser needs to be added to the telescope. An ideal material is Mylar plastic drafting film, obtained from an office supplies warehouse. It is strong and water resistant and can be easily replaced if damaged. Stretch a piece of the film loosely across the aperture of your telescope and point the instrument high in the sky, to avoid any gradient in the light near the horizon. Now take several images with exposure times adjusted to give a bright, but not overloaded, picture. A histogram peaking at around 128 is ideal. Averaging flat fields together is a good way to reduce their noise contribution and so recording 4, or more, images is a good idea.

To use your flat fields, they must first have a dark frame subtracted. Although this may appear to be unimportant with such brightly lit and short exposures, there is the 'bias offset' of the camera in each image and this can produce an error in the final correction. As we are mainly interested in the bias, any very short exposure dark frame will give a good result. The dark subtracted images should then be averaged together before use.

After the above procedures have been executed, the flat field will be ready for use. Load up your image for processing, subtract the dark frame and then select 'Apply flat field' in the 'Merge' menu. The result should be an image with very few signs of the original artefacts and you can then process it in the normal way.

The TRIUS PRO-674C guider port

The TRIUS PRO-674C is provided with a guide port for use with ST4 compatible mounts. The Autoguider output port is a 6 way RJ11 socket, which is compatible with the standard autoguider input of most telescope mounts. It provides 4 active-low opto-isolator outputs and a common return line, capable of sinking a minimum of 5mA per output. This socket may be used for telescope control if the TRIUS-H674C is employed as an autoguider.



Camera maintenance:

Very little maintenance is needed to keep the TRIUS PRO-674C in excellent operating order, however two problems, which are common to all CCD equipment, might show up on occasion. These are dust and condensation.

Removing Dust:

1) Dust can be deposited on either the optical window (not a big problem to cure), or on the CCD faceplate (very difficult to eliminate entirely). When small particles collect on the window they may not be noticed at all on deep sky (small F ratio) images, as they will be very much out of focus. However, if a powerful contrast boost of the image is carried out, they may well begin to show as the shadow 'Do-nuts' mentioned earlier. Images taken with a large F ratio optical system are more likely to be affected by such dirt, owing to the smaller and sharper shadows that they cast. A light polluted sky will also make these marks much more obvious. There is no great difficulty in removing such particles on the outside surface by the careful use of a lens cleaning cloth, 'lens pen', or 'air duster' and so you should have little trouble with this aspect of maintenance. Dust on the CCD faceplate is a much greater nuisance, as it casts very sharply defined and dark shadows and it entails dismantling the camera to get rid of it! To clean the CCD you will need a good quality lens cloth (no silicone) or tissues and some high-grade acetone or isopropyl alcohol. A very suitable cloth is the 'Micro-Fibre' type marketed by PENTAX etc., and suitable alcohol is available from Maplin or Radio Shack etc. as tape head cleaning fluid. Most

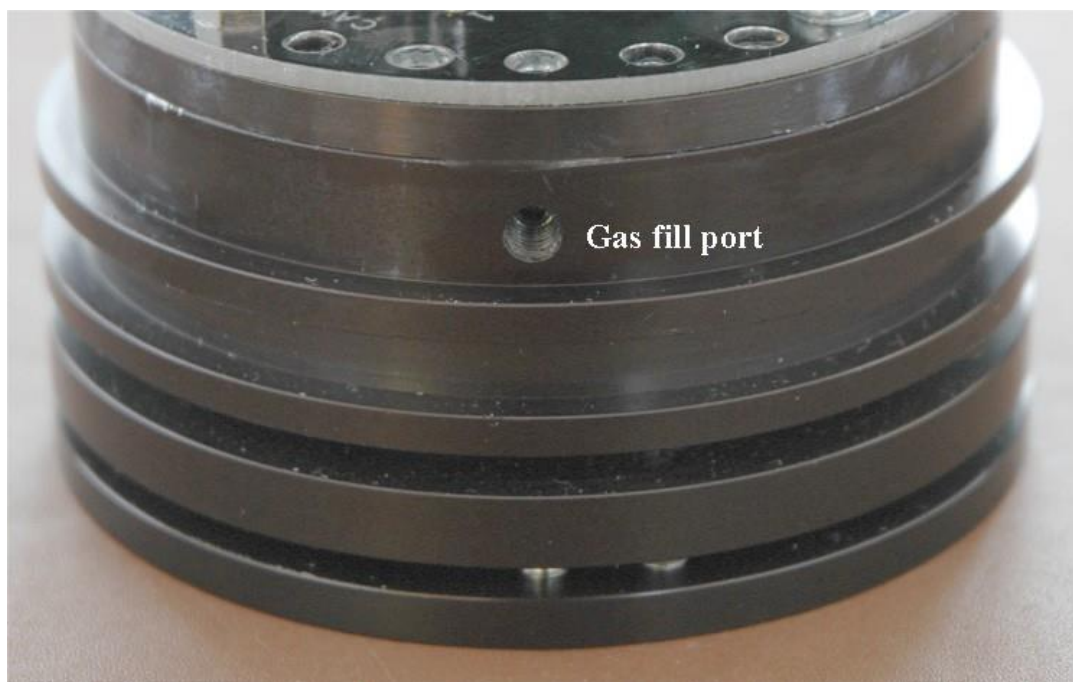
pharmacist shops will have small bottles of pure acetone. A bright light and a strong watchmakers eyeglass will also be found to be essential.

Procedure:

- 1) Disconnect the lead from the camera head and remove it from the telescope. Place it on a table with the optical window facing downward.
- 2) Remove the two M3 screws and the M8 nut from the camera back plate and ease the plate out of the camera body. Unplug the fan lead from the camera PCB.
- 3) Withdraw the body cylinder and unscrew the two top spacer pillars from the PCB. Now gently lift the PCB off the 20 way connector NOTING THE ORIENTATION OF THE BOARD for correct replacement later. Now remove the lower two spacers from the heat sink plate assembly.
- 4) The camera heat sink assembly can now be lifted away from the camera front barrel and the CCD will be exposed. Note that a layer of white heat-sink compound is applied to the periphery of the heat sink disc and this should be left undisturbed by subsequent operations.
- 5) You can now closely examine the CCD faceplate under the spotlight using the watchmaker's glass when any dust motes will show clearly. If there is only an odd particle or two and the CCD is otherwise clean, carefully brush away the dust with a corner of your lens cloth. A smeared or very dusty CCD will need a few drops of alcohol to clean thoroughly and you may have to make several attempts before the surface is free of contamination. One gentle wipe from one end to the other, with no return stroke, will be found to be the most effective action. DO NOT rub vigorously and be very careful to avoid scratching the window.
- 6) Before re-assembly, make certain that the inside surface of the front window is also clean, and then carefully replace the camera front barrel and screw it into place. (If the heat sink seal is disturbed, renew it with fresh compound before reassembling).
- 7) Replace all the camera parts in reverse order and the job is done.

Dealing with condensation:

The TRIUS PRO-674C is designed to avoid condensation by minimising the volume of gas trapped within the CCD cavity and by preventing moisture ingress. This normally works very well, but storage of the camera in a humid location can lead to the trapped argon becoming moist by diffusion through the optical window mounting thread etc. and can result in condensation on the CCD window. If this becomes a problem, try storing the camera in a warm, dry place, or in a plastic lunch box containing a sachet of silica gel desiccant. If this is not effective, it is possible to flush the CCD chamber with dry argon from a small welding gas cylinder. Such argon gas cylinders, valves and suitable plastic tubing, are readily available from many car spares suppliers, such as Halfords, in the UK. Two ports are provided in the sides of the CCD cavity and these may be accessed by unscrewing the rear plate of the camera and then sliding off the main barrel.



The ports are sealed by M4 stainless set-screws and soft plugs, which may be removed to provide access to the chamber gas fill. You will need to make some kind of nozzle to fit the gas ports, but simply tapering the end of the standard 4 mm plastic gas tubing that is used with small welding bottles, will probably be sufficient. To recharge the chamber, first remove both gas plugs and then insert the tapered end of the argon cylinder tube into one port. Gently turn on the argon supply for about 10 seconds and then refit the plug into the output port. The filling tube may then be extracted and the second port re-sealed.

N.B. DO NOT leave the camera switched on for long periods between uses. The cold CCD will collect ice by slow diffusion through any small leaks and this will become corrosive water on the cooler and CCD pins when the power is removed. If substantial amounts of moisture are seen, dismantle the camera and dry it thoroughly.

Alternative Software

Although we hope that you will be satisfied with our 'SXV_hmf_usb' software, other companies are offering alternative programs with more powerful processing functions. One of these is programs is 'AstroArt' by MSB software. You can purchase AstroArt from many dealers Worldwide and more information may be obtained from their web site at <http://www.msb-astroart.com>

'Maxim DL' is another popular choice and you can find out more by visiting <http://www.cyanogen.com>

'Nebulosity 3' also works very well with the H674C.

<http://www.stark-labs.com/nebulosity.html>

Some details of the camera and CCD characteristics

The TRIUS PRO-674C uses a Sony ICX674AQG 'EXview' progressive scan CCD, with 1940 x 1460 x 4.54 μ M pixels in a 8.8 x 6.3 mm active area. This EXview device

CCD type: Sony ICX674AQG EXview interline imager.

CCD size: Active area 8.8mm x 6.3mm

CCD pixels: 1940 x 1460 pixel array. Each pixel is 4.54 x 4.54 μ M square

Bayer Matrix: RGBG primary colour

Well depth: Full res. mode 18,000e. Binned 2x2 mode approx. 22,000e

Mean visual QE: 70%, 77% at peak (580nm)

Useful spectral response: 360nm – 1100nm

Readout noise: Approx. 4e RMS typical, 8e max.

Back focal distance: The CCD is approximately 17.5mm from the barrel front.

Camera size: 75mm diameter x 70mm long

Dear User,

Thank you for purchasing a Starlight Xpress product. We are confident that you will gain a great deal of satisfaction from this equipment, but please read carefully the instruction manual, supplied with your product, to ensure that you achieve the best performance that it is capable of providing.

As with most sophisticated equipment a certain amount of routine maintenance is necessary to keep the equipment operating at its optimum performance. The maintenance has been kept to a minimum, and is fully described in the manual.

Starlight Xpress Ltd. warrants all Starlight Xpress products to be free from defects in workmanship and materials, under normal operating use and conditions, for a period of two (2) years following the original invoice date. This limited warranty does not cover failures due to abuse, accidental damage, or when repairs have been made or attempted by anyone other than Starlight Xpress. A defective product meeting the warranty conditions set forth herein will be replaced or repaired at no charge.

Replacement or Repair

If a product arrived with the user and is immediately faulty, Starlight Xpress, if contacted within 30 days of purchase, and with evidence proving a defective product, will offer a free replacement, subject to the verification of the defect or malfunction. The customer shall return the complete product package, including all parts, accessories, and manuals, etc. for a replacement.

Exclusions:

1. The equipment shall only be used for normal purposes described in the standard operating instructions, and within the relevant safety standards of the country where the equipment is used.
2. External mechanical force (i.e. dropped, scratched sensor window, damaged metalwork, a broken or damaged USB port, power supply connector etc.)
3. Water or moisture inside the product due to improper storage or use.
4. The guarantee shall not apply to the equipment damaged by flood, fire, earthquake, lighting strike etc. (Force majeure)
5. Disassembling, repairing, or refurbishment made or attempted by anyone other than Starlight Xpress without prior authorisation.
6. This guarantee shall not apply to components that have a naturally limited life.
7. Starlight Xpress' decision in all matters is final, and any faulty component which has been replaced will become the property of Starlight Xpress Ltd.

This Limited Warranty is NOT transferable and applies ONLY to direct customers who purchase product from Starlight Xpress or/and its authorized dealers.

Please don't forget to register your SX Product at <https://www.sxccd.com/support/warranty-policy-and-registration/> to initiate your warranty

For further info. or advice, please contact us:

Starlight Xpress Ltd., Unit 3, Brooklands Business Park, Bottle Lane, Binfield, Berkshire, England. RG42 5QX

Tel: +44(0)1184026898

Email: info@starlight-xpress.co.uk

Web site: <http://www.sxccd.com>