



Handbook for the Starlight Xpress Mini Filter Wheel with OAG

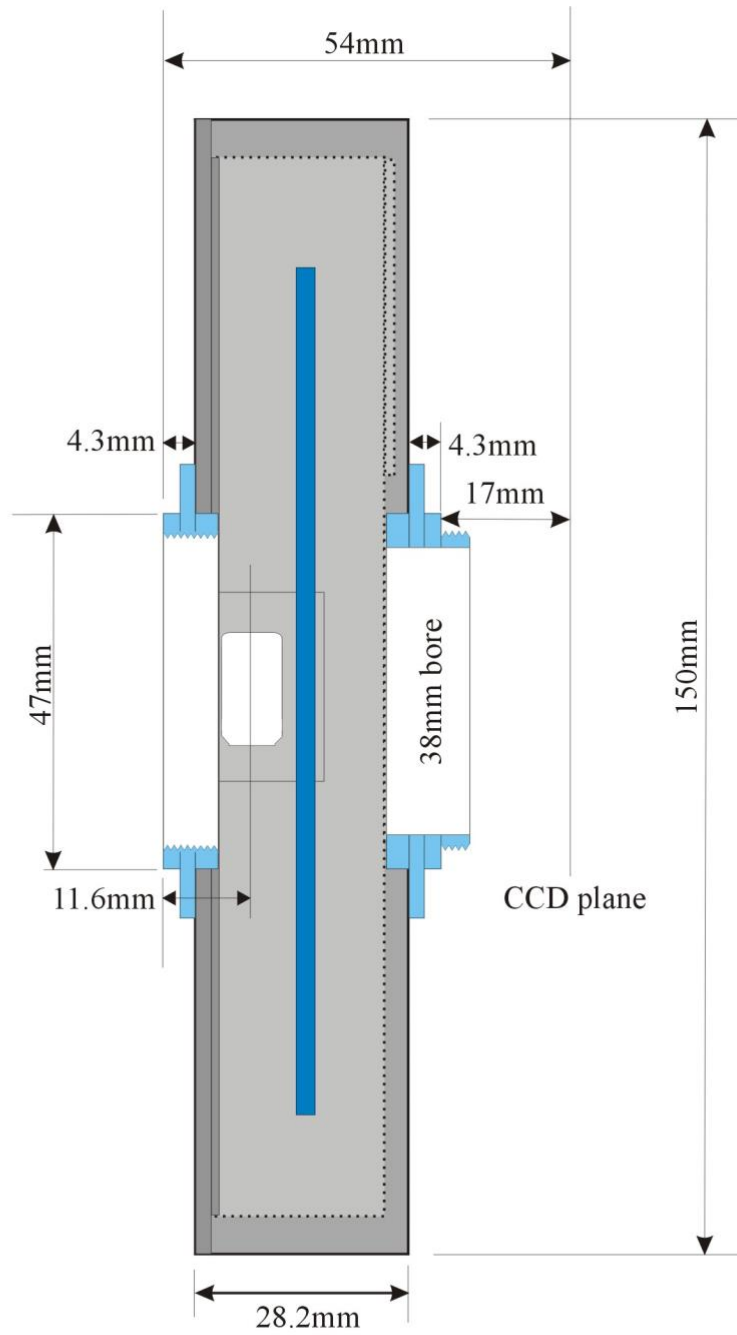
Thank you for your purchase of a Starlight Xpress Mini Filter Wheel. We hope that you will enjoy using this advanced SX unit, which offers many unique features. This handbook will help you to put it into operation and to understand its capabilities. Please read it carefully.



Description:

The SX Mini Filter Wheel has several important advantages over older and less sophisticated designs:

- 1) The wheel uses an internal sub-miniature DC motor drive to turn the filter plate. This consumes far less power than the more typical stepper motor and allows wheel operation directly from the USB input, thus eliminating the cumbersome power supply and extra power cable. The DC drive also produces a quiet and vibration-free filter translation and eliminates a significant amount of bulk and weight.
- 2) The filter locations are encoded by 2 Hall-effect magnetic sensors, which permit up to 5 unique filter positions to be defined. The control software can specify a particular filter without prior knowledge of the location of 'position 1' – so the filters can never get out of sequence. The lack of any infrared optical sensors also prevents stray infrared light from entering the CCD camera and causing strange image artefacts.
- 3) The input and output adaptors are both removable and also may be oriented at any rotational angle to set the wheel and camera into optimum positions. The standard 'T' thread adaptors may be replaced with other versions, simply by unscrewing three fixing bolts.
- 4) Two interchangeable filter plates are available – one with 5 x 32.5mm threaded filter positions and the other with 5 x 36mm unmounted filter locations. These are easily swapped by removing 5 'thumbscrew' fixings and simply dropping the plate into place. There are no gears or belt drives to engage and the plate drops directly into contact with the motor drive drum. Easily done, even by flashlight!
- 5) The integrated OAG pick-off prism makes off-axis guiding extremely easy. The prism is par-focal with most SX cameras and may be adjusted to suit many other makes.
- 6) The slim design of the mini Wheel minimises the loss of optical back focal distance to only 37mm overall (including the T thread adaptors)



Mini wheel cross-sectional view

Loading the filters:

Open the wheel by unscrewing the 4 small thumbscrews from around the periphery of the wheel chamber, lift off the cover and then remove the single large thumbscrew and washer from the internal central pillar. You can now lift the filter plate off the centre bearing and place it down with the magnet screws facing upwards. Your threaded filters may now be screwed into the plate from the magnet screw side, placing them in the desired numerical order according to the engraving on the plate. Unmounted 36mm filters are fitted into the recesses in the top surface and held in place with nylon screws and washers. Re-assemble the wheel by reversing the sequence of operations above.

Installing the software:

No drivers are required for the SX mini Wheel. The USB input is an 'HID' device which Windows recognises automatically. Popular third-party software, such as AstroArt and MaximDL include the command sets for the SX mini Wheel, and the latest SX software can also be used with the wheel. You may also use a simple Windows 'Console' program, which is provided on the USB Stick. This program, 'SX Filter Wheel.exe', may be copied into a folder on your computer and will display a filter wheel control panel when executed. It may be found useful for both testing the wheel and operating it when the camera software does not support the SX wheel protocols.

Connecting up the wheel:

USB control:

If you are using USB control, then the only connection required is that between the USB port on the wheel and a USB output on your computer. You may, of course, use a USB hub, if necessary – a powered hub is recommended to ensure that the wheel motor has sufficient torque to operate reliably. When the wheel is first connected, Windows will display a message about 'New hardware found' followed by 'SX filter wheel'. Shortly afterwards, the wheel will rotate once or twice as it calibrates and determines the number of filter positions available. It is now in position 1 and ready to use.

Using the OAG pick-off:

The OAG pick-off assembly is designed to be used with an SX Lodestar or Ultrastar series of guide cameras, but other types may be employed if they have a 'C' mount (1 inch) threaded input collar. Fit the guide camera onto the C mount ring and slide the ring onto the OAG tube. Use the small lock screw to fix it about halfway down the tube. Loosen the large lock screw and slide the prism tube until the prism is roughly tangential with the edge of the filter aperture. With this assembly attached to the 'scope and the main camera operating, focus the main camera to give a sharp image. Now switch to the guide camera images and adjust the C mount ring along the pick-off tube until the guide camera is focused on any visible stars in the guider

field. If you cannot see many stars, or they are badly distorted, slide the prism assembly a little further in, but be careful not to 'shadow' the main camera field.

Filter Wheel maintenance:

Very little maintenance is required and is limited to occasionally cleaning the carousel and drive wheel to remove any dirt or grease deposits that might cause slippage. A few drops of alcohol on a soft cloth will clean the surfaces and fix any drive problems. Under very cold conditions, residual moisture might cause the central bearing to freeze to the brass shaft. This can be alleviated by applying a single drop of light oil to the shaft to repel moisture.

Starlight Xpress Mini Filter Wheel Communication Protocols

Interfaces available:

USB: 1.1 or 2.0

General parameters:

Total Filters: This is the number of filters fitted on the wheel, and is 5 for the mini Wheel.

Filter number: This is any number from 1 to <Total Filters>
(If a Filter Number higher than Total Filters is requested then the Filter Number is set to <Total Filters>)

USB Protocol:

The SX filter wheel uses a simple “Human Interface Device” protocol, so no special driver needs to be installed. The driver is an integral part of the Windows PC operating system.

Communications between the PC & filter wheel is by input and output reports (referenced to the PC). These reports are both of a fixed length of two bytes. The PC sends the output report and the filter wheel, about 1ms later, will send an input report in response.

The output report data is formatted thus:

Description	1 st byte	2 nd byte
Select Filter	New Filter number	Zero (0)
Request current filter number	Zero	Zero
Get Filter Total	Zero	One (1)

The input report data is formatted thus:

Response To:	1 st byte	2 nd byte
Select New Filter	New Filter number or Zero = filters moving	Total filters
Request current filter number	Current Filter number or Zero = filters moving	Total filters
Get Filter Total	Current Filter number or Zero = filters moving	Zero

NB: The ‘Get Filter Total’ command responds straight away with a “filters moving” message. However there is a delay of several seconds before the Total Filters data is available to the “Request Current Filter Number” command. This is the time taken for the wheel to complete between one and two complete rotations. During this period the Total Filters will be reported as zero. When this command is completed filter 1 is automatically selected.

Dear Observer,

Thank you for purchasing a Starlight Xpress product. We are confident that you will gain a great deal of satisfaction from this equipment, but please read carefully the instruction manual, supplied with your product, to ensure that you achieve the best performance that it is capable of providing.

As with most sophisticated equipment a certain amount of routine maintenance is necessary to keep the equipment operating at its optimum performance. The maintenance has been kept to a minimum, and is fully described in the manual.

Starlight Xpress Ltd. warrants all Starlight Xpress products to be free from defects in workmanship and materials, under normal operating use and conditions, for a period of two (2) years following the original invoice date. This limited warranty does not cover failures due to abuse, accidental damage, or when repairs have been made or attempted by anyone other than Starlight Xpress. A defective product meeting the warranty conditions set forth herein will be replaced or repaired at no charge.

Replacement or Repair

If a product arrived with the user and is immediately faulty, Starlight Xpress, if contacted within 30 days of purchase, and with evidence proving a defective product, will offer a free replacement, subject to the verification of the defect or malfunction. The customer shall return the complete product package, including all parts, accessories, and manuals, etc. for a replacement.

Exclusions:

1. The equipment shall only be used for normal purposes described in the standard operating instructions, and within the relevant safety standards of the country where the equipment is used.
2. External mechanical force (i.e. dropped, scratched sensor window, damaged metalwork, a broken or damaged USB port, power supply connector etc.)
3. Water or moisture inside the product due to improper storage or use.
4. The guarantee shall not apply to the equipment damaged by flood, fire, earthquake, lighting strike etc. (Force majeure)
5. Disassembling, repairing, or refurbishment made or attempted by anyone other than Starlight Xpress without prior authorisation.
6. This guarantee shall not apply to components that have a naturally limited life.
7. Starlight Xpress' decision in all matters is final, and any faulty component which has been replaced will become the property of Starlight Xpress Ltd.

This Limited Warranty is NOT transferable and applies ONLY to direct customers who purchase product from Starlight Xpress or/and its authorized dealers.

Please don't forget to register your SX Product at <https://www.sxccd.com/support/warranty-policy-and-registration/> to initiate your warranty

For further info. or advice, please **contact us:**

Starlight Xpress Ltd., Unit 3, Brooklands Business Park, Bottle Lane, Binfield, Berkshire, England. RG42 5QX

Tel: +44(0)1184026898

Email: info@starlight-xpress.co.uk

Web site: <http://www.sxccd.com>